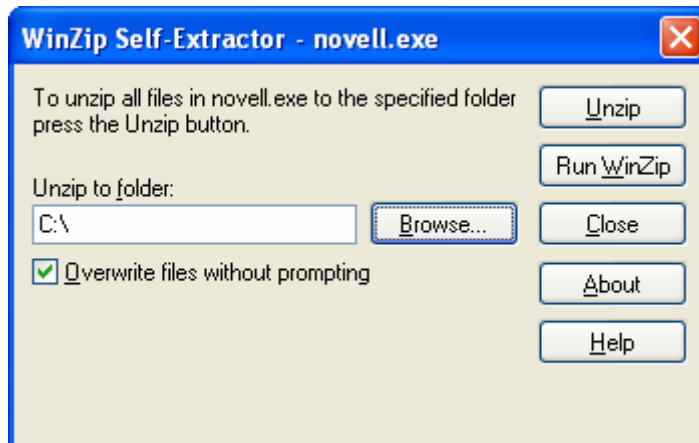
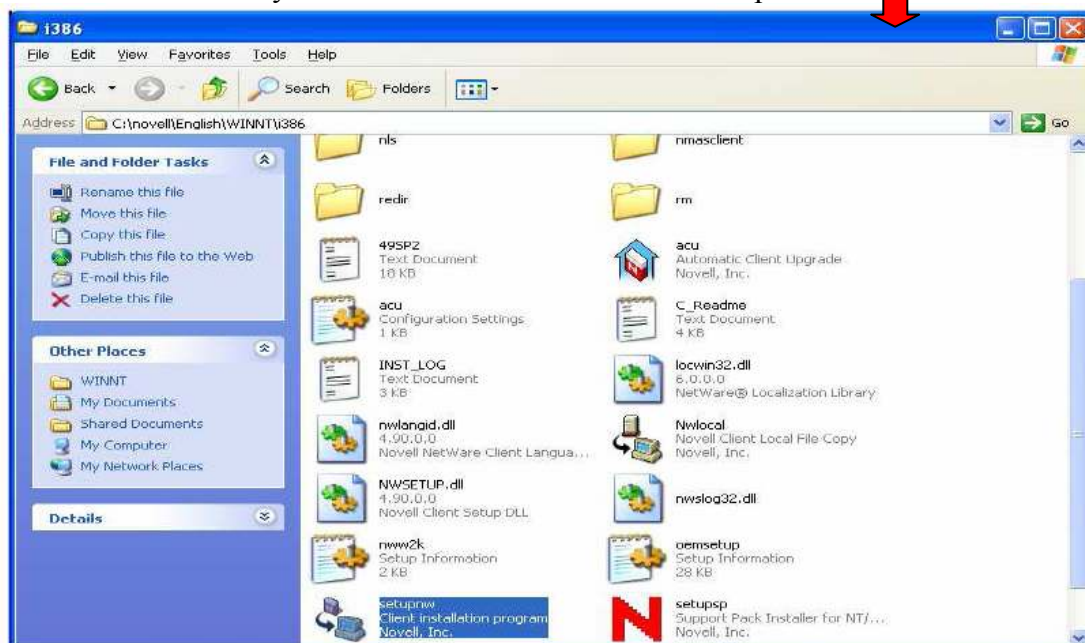


Installing the Novell Netware Client on your Windows XP computer

- Download the Novell Netware Client from <http://its.monash.ac.za/students/forms.html>
- The downloaded file is named 'novell.exe' - This is a self-extractable-Winzip file. Save this file to your C-drive.
- Now double click on the file after which the following window will appear:

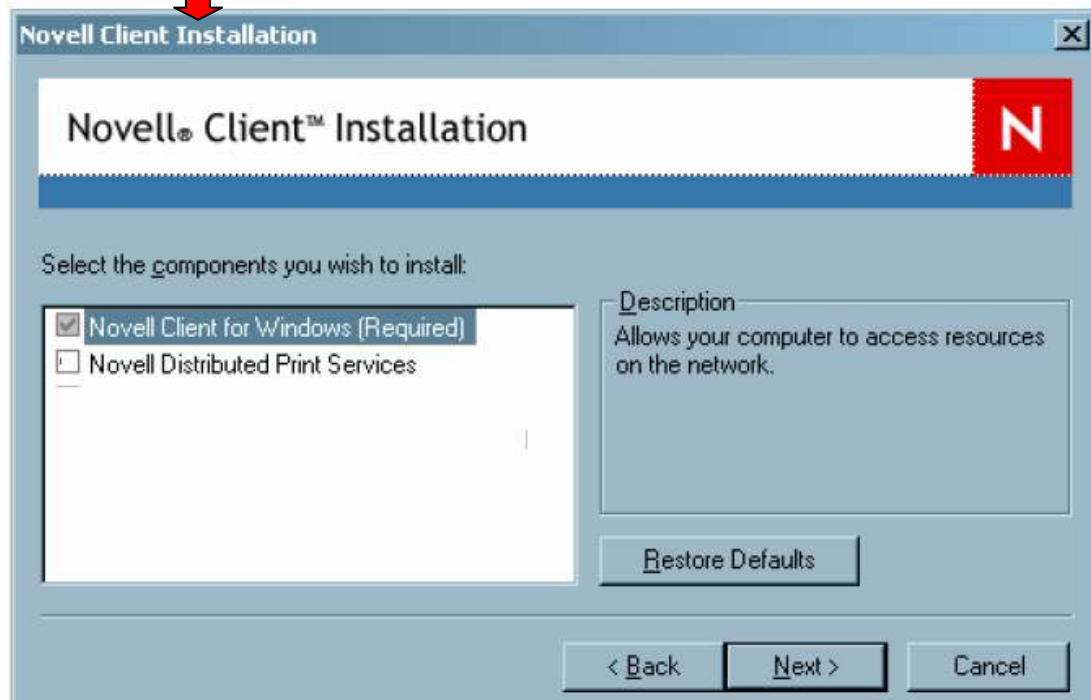


- By 'Unzip to folder' type "C:\:" as indicated above, or click on browse and select your local harddrive
- Open the 'Novell' folder located on your C-drive, or local harddrive.
- Browse to the following location 'C:\novell\English\WINNT\i386'
- In the 'i386' folder you will need to double click on 'setupnw.exe'

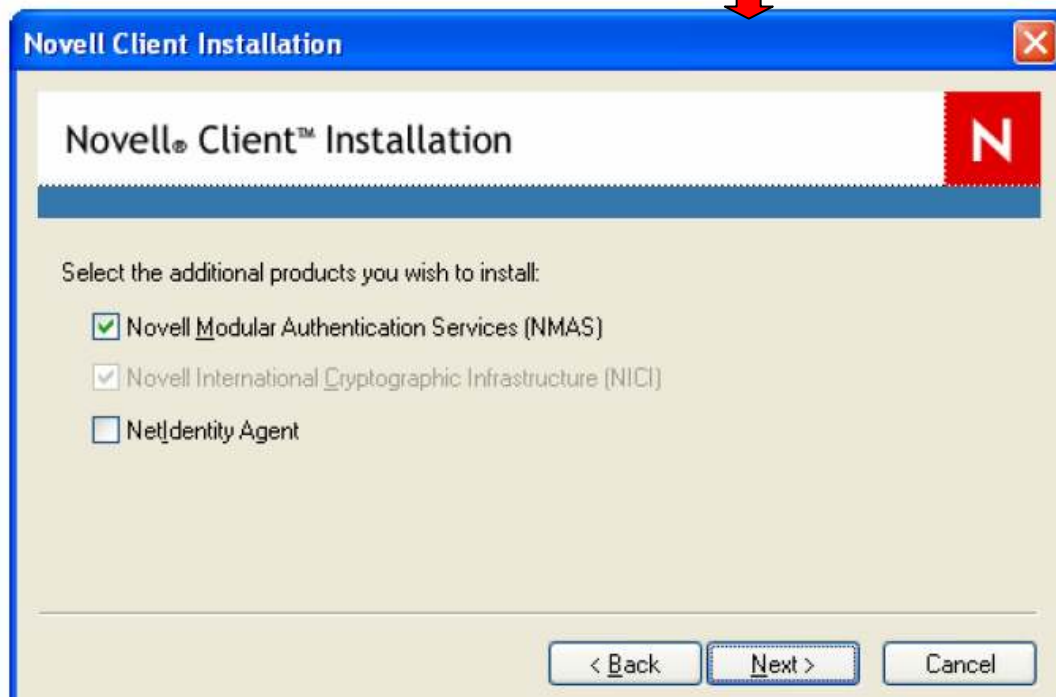


- On the next window, click 'Yes', to accept the software terms and conditions.
- On the next window, select 'Custom Installation', then click on 'Next'

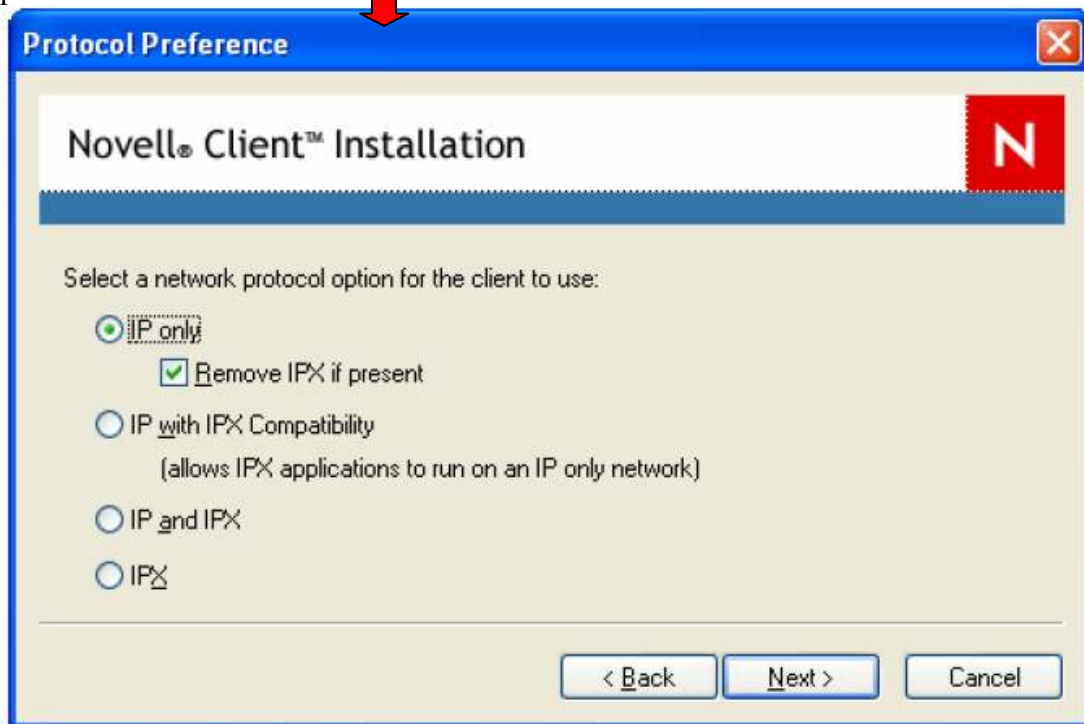
- On the next window, ensure that only “Novell Client for Windows” is ticked, then click ‘Next’



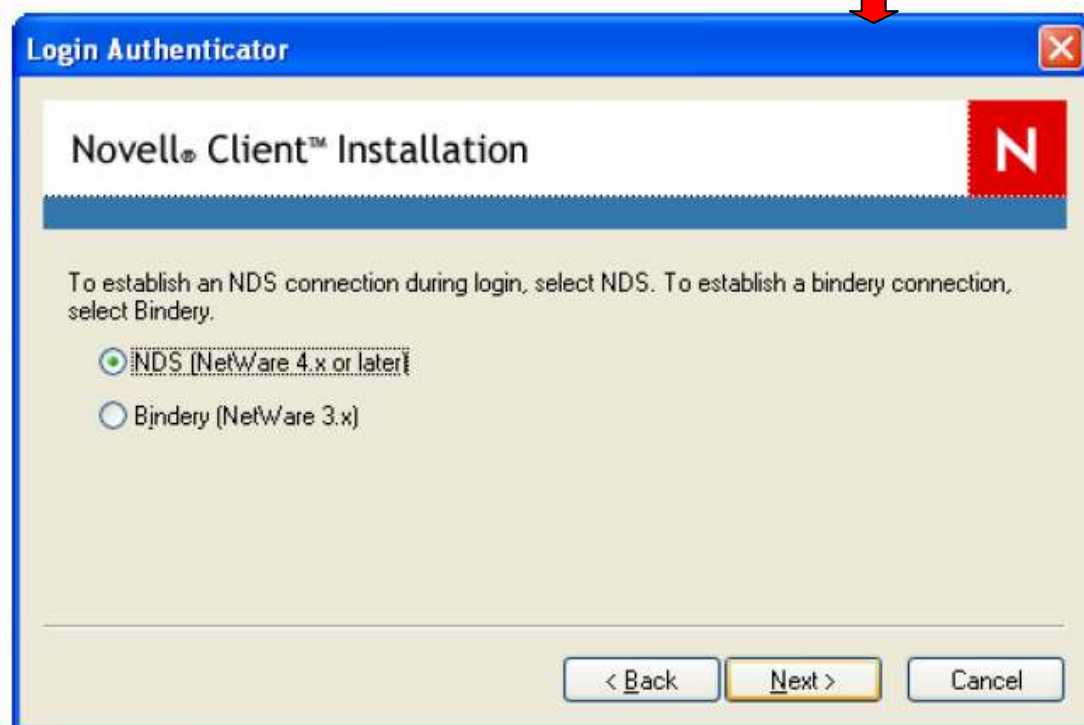
- Leave the next window unchanged, and click on ‘Next’



- On the next window place tick by 'IP only' and also place a tick by 'Remove IPX if present' and click 'Next'



- Leave the default selection on the next window and click "Next"



- **NB:** On the next window enter the tree name as "MONASH-ZA" (if it asks for the Tree Name) and click "Next" and then "Finish"
- After you have completed this installation, please restart your computer and then logon to the Novell Server – If you are not able to access your U-drive and T-drive, please visit the ITS Helpdesk for advice.